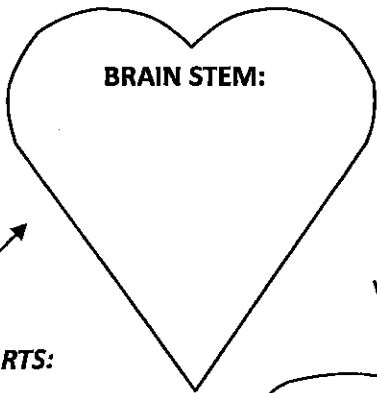
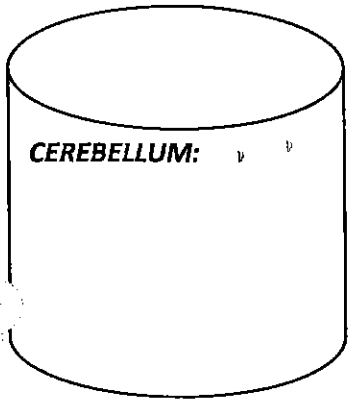


CEREBRUM:



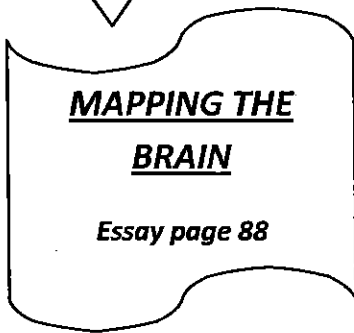
BRAIN STEM:



CEREBELLUM:

BRAIN PARTS:

What do each control?



**MAPPING THE
BRAIN**

Essay page 88

Who

What happened to him?

What we learned:

Name: _____

Block _____

Date _____

Group _____

Resulted in:

1. _____

2. **He became** _____

Name _____

Block _____

Date _____

Group _____

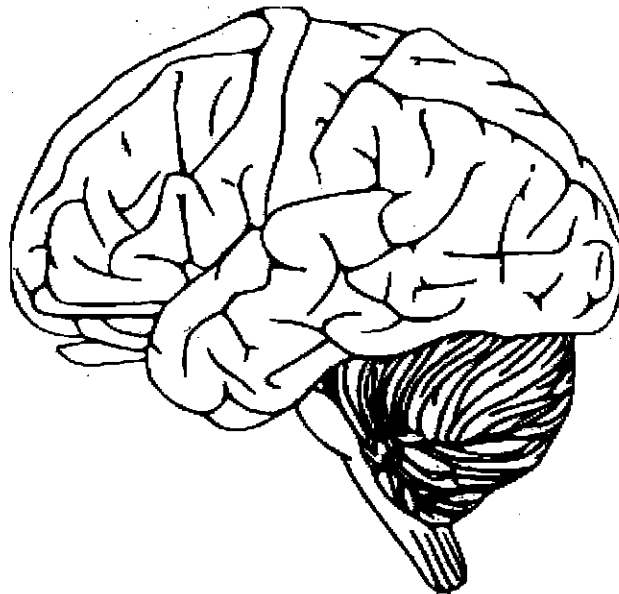
Brain Anatomy

Go to this website: <http://outreach.mcb.harvard.edu/animations/brainanatomy.swf>

Follow Spike the Neuron on a tour through the human brain.

On the diagram of the brain below identify the **four lobes** of the cerebrum and the **sensory cortex** and **motor cortex**.

1. Write the name of each part on the outside of the brain and draw a line to the correct area.
2. Color each lobe a different color. Color the sensory and motor cortices a darker shade of the color of the lobe in which they are found.



Fill in the chart below with the correct information for each part.

Brain Part	Function(s)
Frontal Lobe	
Parietal Lobe	
Temporal Lobe	
Occipital Lobe	
Sensory Cortex	
Motor Cortex	