

Name \_\_\_\_\_ Date \_\_\_\_\_ Block \_\_\_\_\_ Group # \_\_\_\_\_

**Intro Chapter/ Chapter 1 Test: Study Guide (CP)**

**Scientific Method** –List the steps and describe each (**Journal Page** \_\_\_\_\_)

1. \_\_\_\_\_
2. \_\_\_\_\_
3. \_\_\_\_\_
4. \_\_\_\_\_
5. \_\_\_\_\_
6. \_\_\_\_\_

**Testable Question**–give a definition and an example (**Journal Page** \_\_\_\_\_)

Definition \_\_\_\_\_  
\_\_\_\_\_

Example \_\_\_\_\_  
\_\_\_\_\_

**Unique Human Traits**

List 6 unique human traits and the benefits of each? (**Journal page** \_\_\_\_\_)

Human Trait	Benefit

What are 2 kinds of **grips**? \_\_\_\_\_ and \_\_\_\_\_

Describe what an **opposable thumb** is:

\_\_\_\_\_  
\_\_\_\_\_

Which of the two grips is possible because humans have an opposable thumb? \_\_\_\_\_

List 4 traits of the human skeleton that allow us to be **bipedal** . (Journal page \_\_\_\_\_)

1. \_\_\_\_\_
2. \_\_\_\_\_
3. \_\_\_\_\_
4. \_\_\_\_\_

Why are culture and language so well developed in humans? (Journal page \_\_\_\_\_)

---

### **Experimental Design**

Define the following:

Control group \_\_\_\_\_

Experimental group \_\_\_\_\_

Independent Variable \_\_\_\_\_

Dependent Variable \_\_\_\_\_

A group of high school students were given a short course in speed-reading. The instructor was curious if offering a reward of cash would influence performance on a reading test taken at the end of the course. Half the students were offered \$5 for obtaining a "B" or better on the test, the other half were not offered money. When the data was collected 110 students who received money obtained the needed grade and 83 students who got no money earned the same grades.

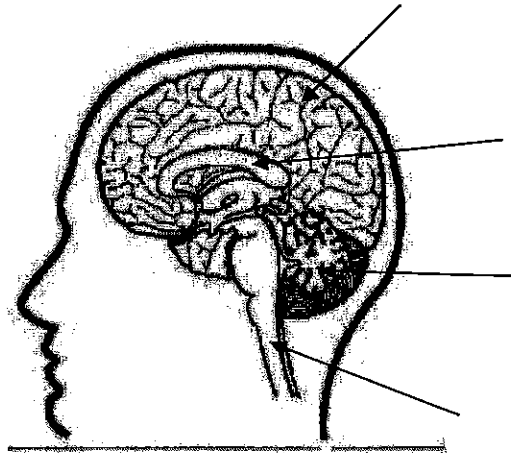
1. Which is the control group? \_\_\_\_\_
2. Which is the experimental group? \_\_\_\_\_
3. Identify the independent variable. \_\_\_\_\_
4. Identify the dependent variable. \_\_\_\_\_
5. After examining the data, what should your conclusion be ? \_\_\_\_\_  
\_\_\_\_\_
6. How do you think the experiment could be improved? \_\_\_\_\_  
\_\_\_\_\_

### **Nervous System**

What is the function of the nervous system? \_\_\_\_\_  
\_\_\_\_\_

List the three major organs of the nervous system and tell whether they are part of the CNS or PNS. \_\_\_\_\_

**Brain** Label the parts of the brain. Know the function of each: cerebrum, brain stem, cerebellum, corpus callosum. Then shade in the lobe of the cerebrum responsible for personality and label it

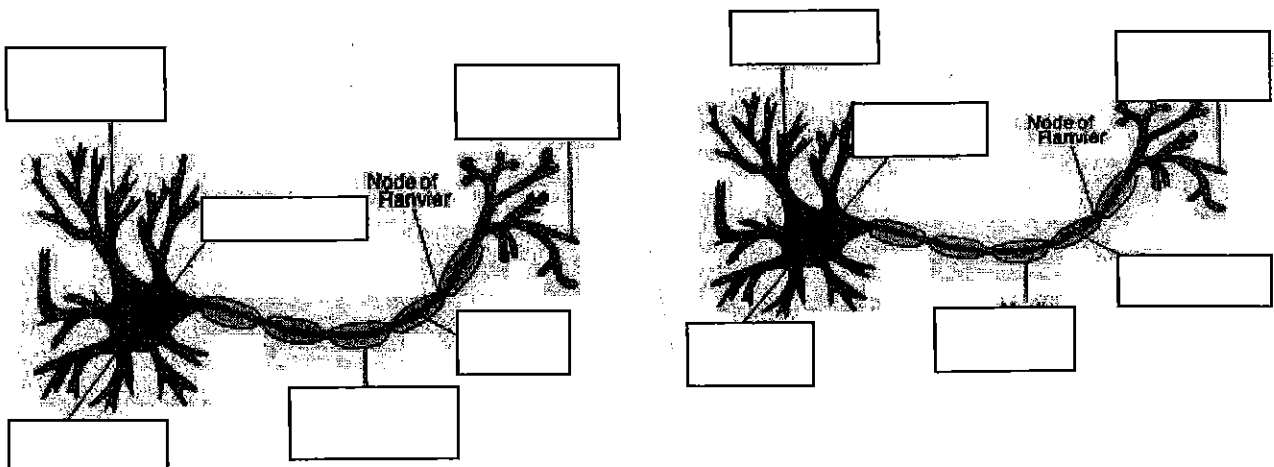


Brain Part	Function
Cerebrum	
Cerebellum	
Brain Stem (medulla)	
Corpus Callosum	
_____ lobe	

What **brain side** controls sensation of feeling for your **left hand**? \_\_\_\_\_

**Neuron** Be able to label the **parts of a neuron**: axon, dendrite, cell body, nucleus, myelin sheath.

Also indicate the synapse and where neurotransmitters can be found. (**Journal page** \_\_\_\_)



## ***Biology Study Guide***

**Matching:** Write the letter of the *best answer choice* on the line next to the description. Answers CAN be used more than once!

- |   |                        |
|---|------------------------|
| 1. _____ The largest part of the human brain.                                   | A. Cerebellum          |
| 2. _____ This part of the brain controls heart beat.                            | B. Right hemisphere    |
| 3. _____ Responsible for a good sense of smell.                                 | C. Left hemisphere     |
| 4. _____ This part of the human brain keeps us "balanced."                      | D. Olfactory bulb      |
| 5. _____ This part of the human brain stores memory.                            | E. Optic lobe          |
| 6. _____ This part of the brain has a lot of "folds."                           | F. Corpus callosum     |
| 7. _____ Responsible for excellent "vision" in animals.                         | G. Neuron              |
| 8. _____ All animals have this part of the brain.                               | H. Medulla /brain stem |
| 9. _____ Nerve fibers that connect the left and right hemispheres of the brain. | I. Cerebrum            |
| 10. _____ A nerve cell.   | J. Bipedal             |
| 11. _____ Controls the right side of our bodies.                                | K. Voluntary           |
| 12. _____ This part of a neuron releases a neurotransmitter.                    | L. Involuntary         |
| 13. _____ Word that means "we can not control it."                              | M. emotions            |
| 14. _____ This part of the human brain is responsible for "thinking."           | N. axon                |
| 15. _____ Word that means "walking upright on two feet."                        | O. dendrites           |

**Fill-in:** Write the *best* answer choice on the line provided to complete each sentence.

16. The \_\_\_\_\_ can carry messages to the brain; it is also responsible for "reflex" behaviors.
17. The \_\_\_\_\_ System allows us to detect changes (stimuli) around us and respond to them.
18. Because humans have a/an \_\_\_\_\_, they can touch each fingertip to their thumb.
19. The two main types of grips that humans have are called the \_\_\_\_\_ and \_\_\_\_\_ grips.
20. \_\_\_\_\_ is defined as the behaviors and beliefs that are shared by a group and passed on from one generation to the next.