

Classification

Vocabulary Review

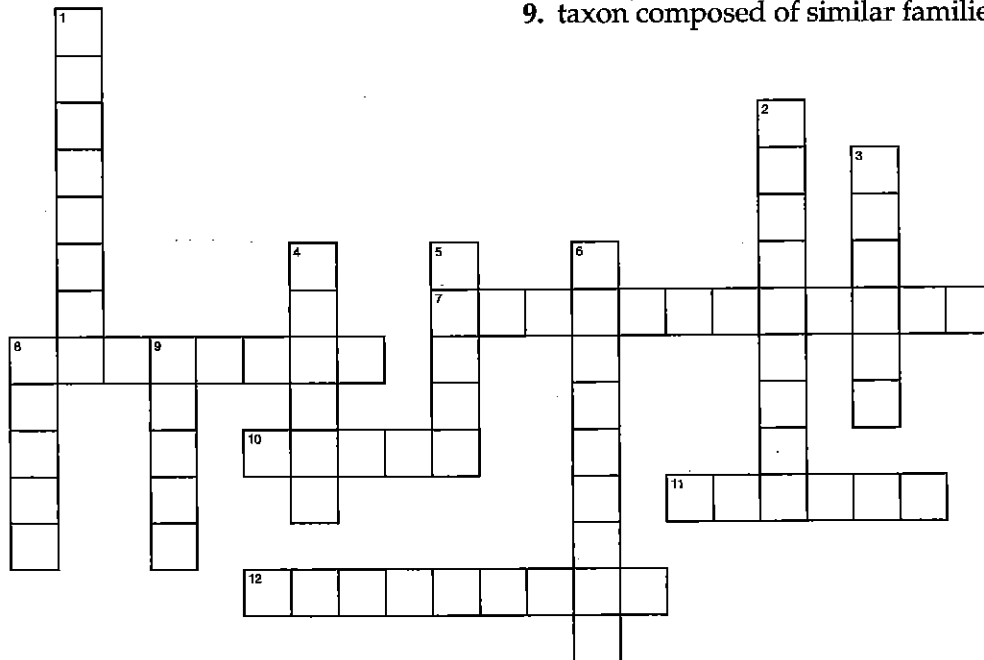
Crossword Puzzle Complete the puzzle by entering the term that matches each numbered description.

Across

- 7. type of classification that is based on evolutionary history
- 8. discipline of classifying and naming organisms
- 10. taxon composed of similar orders
- 11. taxon composed of similar classes
- 12. type of clock that estimates how long species have been evolving independently

Down

- 1. kingdom in the Eukarya domain that includes single-celled autotrophs
- 2. study of evolutionary relationships among organisms
- 3. new taxon that is higher than the kingdom
- 4. taxon composed of similar genera
- 5. taxon composed of closely related species
- 6. diagram based on derived characters
- 8. general term for any level, or category, in a taxonomic system
- 9. taxon composed of similar families



Answering Questions Write one or more sentences to answer each question.

13. In what ways are members of the domain Bacteria and the domain Archaea similar?

14. Which domain includes only organisms with a nucleus in their cells? _____

15. What are two ways that most members of the kingdom Plantae and the kingdom Animalia differ? _____

Classification **Section Review**

Reviewing Key Concepts

Matching *On the line provided, write the letter of the kingdom that best matches each description.*

- | | |
|--|--------------------|
| _____ 1. heterotrophs whose cell walls contain chitin | a. Eubacteria |
| _____ 2. prokaryotes whose cell walls contain peptidoglycan | b. Archaeobacteria |
| _____ 3. multicellular autotrophs whose cell walls contain cellulose | c. Protista |
| _____ 4. prokaryotes whose cell walls lack peptidoglycan | d. Plantae |
| _____ 5. multicellular eukaryotes without cell walls or chloroplasts | e. Fungi |
| _____ 6. unicellular, colonial, or multicellular eukaryotes that show a variety of characteristics | f. Animalia |

Short Answer *On the lines provided, answer the following questions.*

7. In the discipline of taxonomy, what is a domain?

8. What are the three domains into which organisms can be grouped?

9. What characteristic is shared by all members of the domain Eukarya?

10. What must you find out about a prokaryote to know which domain it belongs to?

Reviewing Key Skills

Classifying *On the line provided, label each organism with the kingdom and domain to which it belongs.*

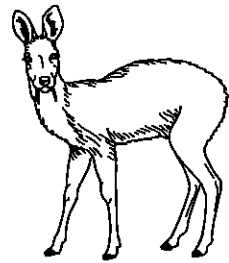
© Pearson Education, Inc. All rights reserved.



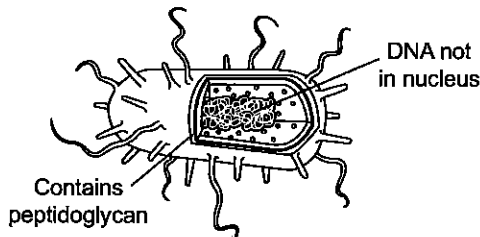
11. _____



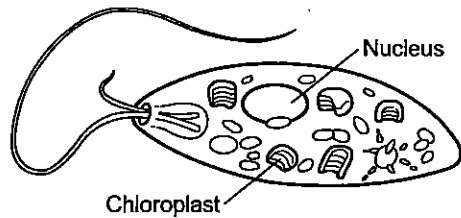
12. _____



13. _____



14. _____



15. _____