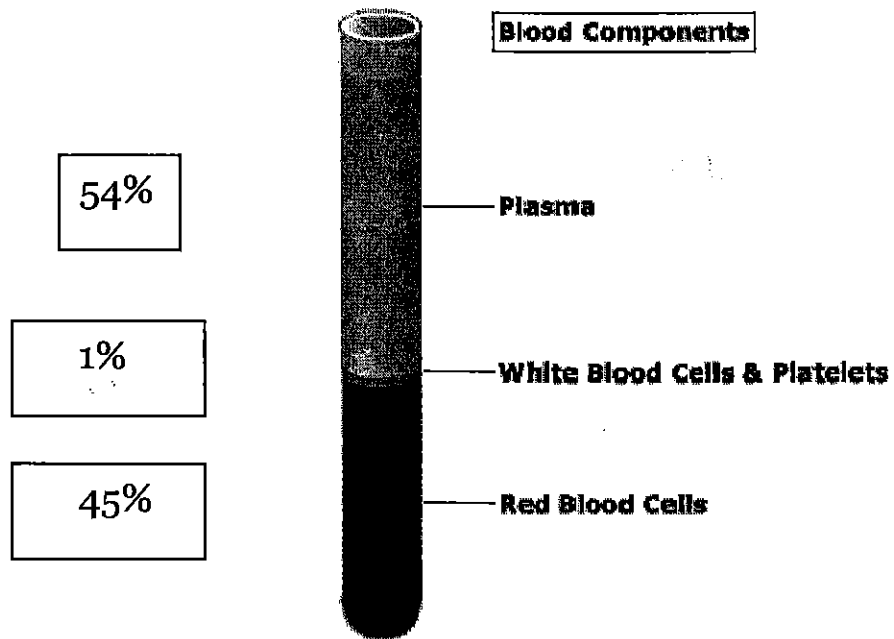
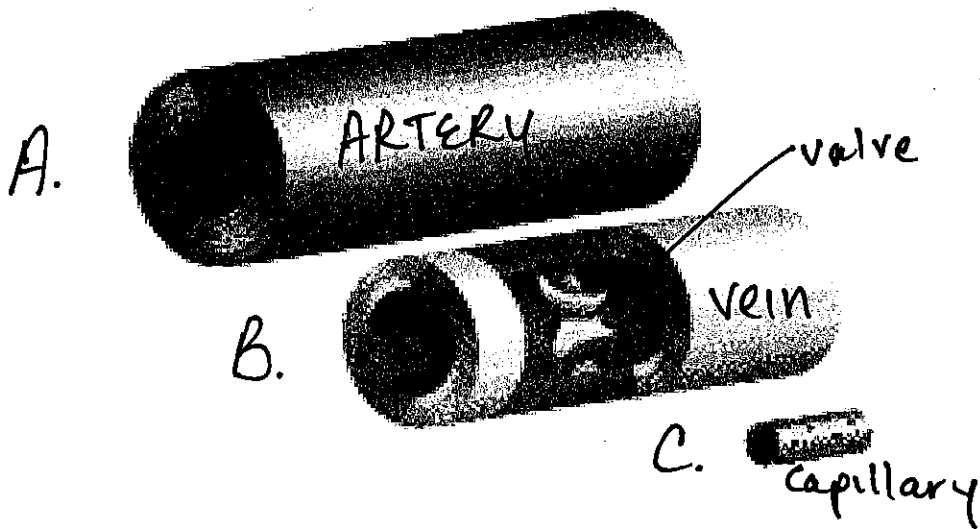


BLOOD

Components

Red Blood Cells	Job-carry oxygen contains hemoglobin (red)
White Blood Cells	Job-destroy pathogens (disease causing organisms)
Platelets	Job- blood clotting to stop bleeding
Plasma	Job-solvent that cells and other substances (food, waste, oxygen, carbon dioxide) are dissolved in





Blood Vessels:

A.) Arteries:

- * Carry blood away from the heart
- * Thick walls/blood under high pressure

B.) Veins:

- * Carry blood to the heart
- * Walls not as thick, blood not under high pressure
- * Contain valves to keep blood moving to heart

C.) Capillaries:

- * Carry Blood between arteries and veins
- * One cell thick
- * Where exchanges of materials occur